

# GRIZZLY

---

## LOADERS

### CHOOSING THE RIGHT MACHINE

Grizzly cranes come in a range of self-loader models, any one of which can be custom designed to meet your needs.

As a first step, you select the machine best suited to your application from the following groups:

**Series 160/215 MT**, designed for:

- quick swing speed
- when a light empty-weight truck is a must
- five or fewer loads per day
- infrequent lifting full machine capacity

**Series 215C/267**, designed for:

- five or more loads per day
- light empty-weight truck is less critical
- when a powerful swing is essential
- having a machine to load other trucks
- frequently requiring a full lift capacity

### TRUCK REQUIREMENTS

After you choose the right machine, you need to determine if the truck you will use is (or will be) appropriately equipped.

*Truck equipment must include:*

- Minimum of 240" wheelbase for self-loader with a 25'1" boom length/ (consult us for shorter wheelbases.)
- Minimum 77.5" from center of trunnion to end of frame to install a Grizzly hop-on system.
- Either a steel or aluminum frame, work well. We line the frame from under the cab guard, all the way back, and we've had good success with all types of frames.

---

### ALL GRIZZLY KNUCKLEBOOM CRANES FEATURE:

- Triple Hydraulic pump
- Heel bar on main jib
- Deluxe seat (fold-down)
- Crimp-on hose ends
- Stack valve controls (wobble stick)
- 14'0" stabilizer spread, standard (8' retracted)
- Self-locking outrigger retraction
- Outrigger controls on operator platform
- Specially hardened, large ball, in-line swivel
- The cleanest hose routing available
- All hoses in critical areas hidden/protected
- The most versatile grapple available
- Most durable boom available
- Trouble-free grapple-motor mounting system
- One-piece PTO system
- Self-aligning bearings on main, jib and outrigger cylinders
- Cushion on swing
- Load-hold checks on outrigger and jib cylinder
- Choice of 25'1", 23' or 21'6"
- Four-jaw grapples
- Weather-sealed hydraulic reservoir with pressurized breather cap
- Strongest, cleanest welds available in the industry

Dimensions are nominal and specifications are subject to change without notice.

Manufacturers of



Knuckleboom Cranes

Since 1977

## MODEL SPECIFICS

<b>Lifting:</b>	<b>100 Series</b>	<b>160 Series</b>	<b>215MT Series</b>	<b>215C Series</b>	<b>267 Series</b>
Maximum Pound Capacity at 8ft	10,000	16,000	20,000	21,500	26,700
Maximum Pound Capacity at 14ft	7,220	9,140	11,605	14,070	19,070
Maximum Pound Capacity at 20ft	3,290	5,400	6,400	6,400	12,400
Maximum Pound Capacity at 25ft	3,200	4,700	4,700	5,000	7,700

### **Weight:**

Approximate weight in pounds	7,000	7,500	8,000	9,500	10,000
------------------------------	-------	-------	-------	-------	--------

### **Bearing:**

Ball-type, weld on Diameter, inches/teeth	28/exterior	28/exterior	28/exterior	39/interior	39/interior
---	-------------	-------------	-------------	-------------	-------------

### **Hydraulics:**

Cylinders, minimum inside dimension, inches

Main	5	6	7	7	8
Jib	5	6	6	6	7
Outrigger	5	6	6	6	6
Grapple	3.5	3.5	3.5	4	4

Pump sections, main/jib/swing, Gallons per minute

24/24/15	30/30/18	30/30/18	30/30/24	30/30/24
----------	----------	----------	----------	----------

Hydraulic reservoir capacity, Gallons per minutes

64	64	64	75	75
----	----	----	----	----

### **Mast:**

Outside diameter, minimum, inches	25.5	25.5	25.5	33	33
-----------------------------------	------	------	------	----	----

### **Grapple:**

Opening, minimum, inches	40	40	40	44	44
--------------------------	----	----	----	----	----

### **Installation:**

Typically included in the installation:

- Lining of the frame from under the cab guard to the back of the truck with 4" x 4" x 3/8" angle-iron, using your truck's bolt pattern
- Modification of cab guard, as necessary
- One-piece air PTO mounted directly to our pump (no drive linkage needed), you supply the constant-speed governor
- Hosing to loader
- Build-up of grapple rack as required
- Oil fill
- Testing – ready to go to work
- All parts and labor
- Standard 360° non continuous rotation on swivel and grapple

### **Hop-on System:**

- Conversion of your reach to a telescoping reach
- 14'0" stabilizer
- Folding reach
- Light bar with trailer ride
- All parts and labor

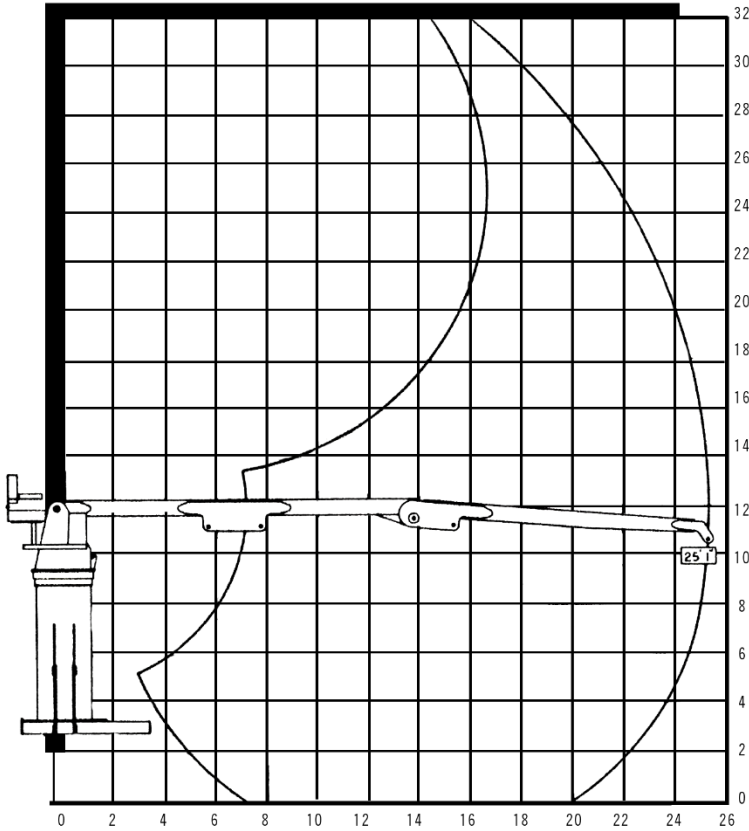
### **Customization:**

We specialize in making particular-use machines (for poles, buildings supplies, etc.). We can paint to match your color specifications, install hooks, ladders, hand-holds, axe and shovel holders, install scale's readout on loader deck etc.; all to your requirements. If it's possible to do safely, we can probably do it for you.

Dimensions are nominal and specifications are subject to change without notice.



# SWING PROFILE



## SWING SYSTEM

Planetary gear reduction with high torque hydraulic motor, direct pinion to turntable bearing and "motion control valve" provide vital functions:

- 360° non-continuous rotation
- Extra swing power
- Positive swing control
- Longer service life

## RATED MAXIMUM LIFT CAPACITIES

RADIUS		LIFT	
Feet	Meters	Pounds	Kilograms
8	2.44	21,500	9,752.24
14	4.27	14,070	6,382.04
20	6.10	6,400	2,902.99

## CONSTRUCTION

Upper frame, lower frame, stabilizers and boom are high quality steel.

Dimensions are nominal and specifications are subject to change without notice.

# GRIZZLY 215C

## SPECIFICATIONS WITH WOBBLE STICK CONTROLS

The lightweight, super-fast **Grizzly 215C KNUCKLE BOOM LOADER** has a lift capacity of 21,500 lbs. at a radius of 8 feet, and horizontal reach of 25' 1". The 215C loader has, as standard equipment, a triple hydraulic system allowing 100% independent swing control.

## HYDRAULIC SPECIFICATIONS

Triple gear pump with approximately 75 G.P.M at 1,200 RPM Stack-type spool valves with reliefs and spring returns. 64-gallon hydraulic oil reservoir with weather sealed access. Completed hydraulic system protection with filtration. Pressure setting of approximately 2,000 P.S.I. Wobble stick controls for quick, responsive handling and foot pedal swing for smooth rotation.

## CYLINDERS QTY BORE STROKE ROD DIA.

Main Boom	1	7"	37½"	3"
Jib Boom	1	6"	36"	3"
Outrigger	2	6"	24"	2½"
Grapple	2	3½"	8"	1¾"

## STANDARD EQUIPMENT

- 360° non-continuous rotation
- Boom – horizontal reach, 25'1"
- 14'0" stabilizer spread
- Triple hydraulic pumps
- Stack valve controls – Wobble stick
- Hydraulic swing mechanism
- 40" interlocking grapple
- Mounting kit
- Heel bar on main boom and jib boom
- Self-aligning bearings on main jib and outrigger cylinders
- Deluxe seat
- Crimp-on hose ends

## OPTIONAL EQUIPMENT

- Hydraulic over hydraulic controls – remote controls
- Grapples – 44", ¼ cord and 1/3 cord
- Continuous rotation on both swing and grapple

Manufacturers of



Knuckleboom Cranes

Since 1977